

Boot-Lift® Railcar Connector

Plant Name: _____

Contact Person: _____

Address: _____

Telephone: _____ Fax: _____

City: _____

Email: _____

State: _____ Zip Code: _____

Date: _____

Type of Material: _____

Equipment needs to be Food-Grade: Yes No

Aligner (moves Boot-Lift® 3-4" either direction parallel to rails): Pneumatic Manual None

Funnel Grizzly: AR500 304SS Opening: 2" 3" 4"

Vibration needed to aid the flow of material: Yes No

Railcar Gate Opener needed to assist with gate opening: Yes No

Railcar Adapter Sheet-Single Gate

Adapter Sheet: Yes No

Adapter Sheet Material: Plywood Mild Steel Stainless Steel HDPE (High Density Polyethylene)

Foam Seal: Standard Cover White Hypalon Wrapped White FDA Neoprene

Railcar Information

Type of Railcar: Single Gate Double Gate Round Gate

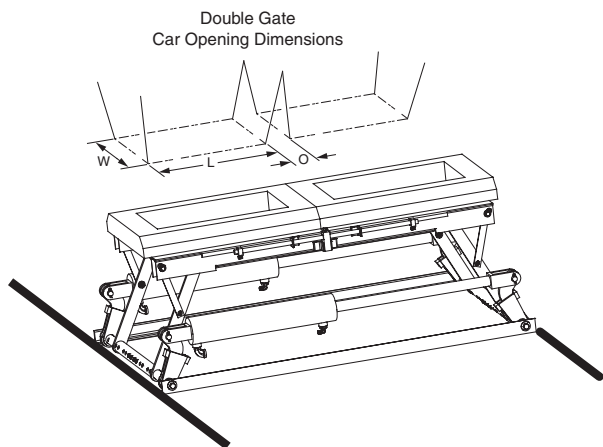
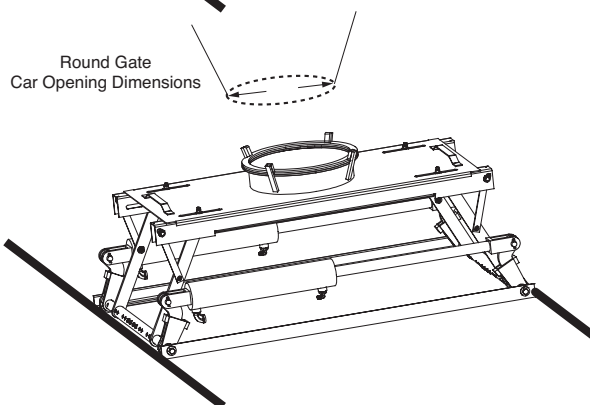
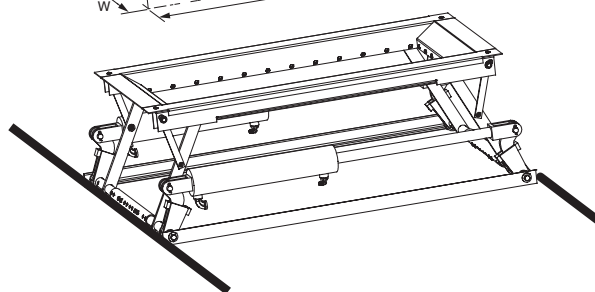
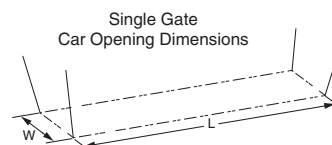
Inner dimensions of railcar discharge gate:

Single Gate: Length (L) _____ x Width (W) _____

Double Gate: Length (L) _____ x Width (W) _____

Distance between openings (O) _____

Round Gate: Diameter = _____ I.D.



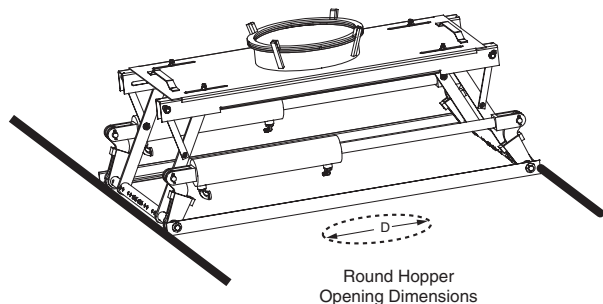
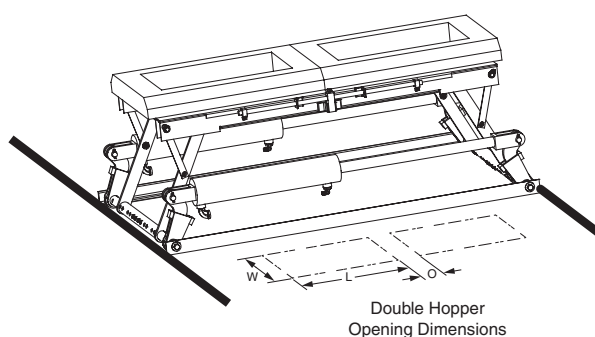
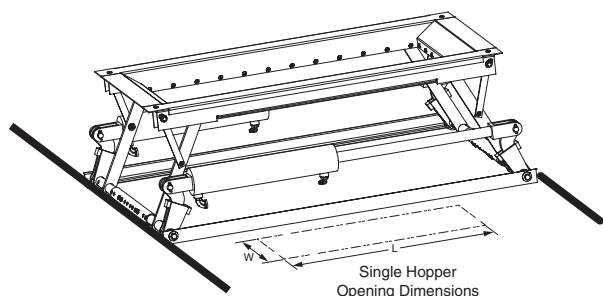
Receiving Hopper Information

Boot-Lift® Railcar Connector Model: SBL-13 (P/N 39589) SBLR-18 (P/N 21055) DBL-18 (P/N 17840)
SBL-24 (P/N 19760) SBL-30 (P/N 35038) SBL-35 (P/N 39594) SBL-48 (P/N 39595)

Boot Material: Black Vinyl Food Grade Flame Retardant

For new installations or modifications, Martin Engineering strongly recommends dimension H be a 3 in. minimum.

Single openings	Length (L) _____ x Width (W) _____ Bottom of rail to top of hopper (H) _____	
Double openings	Length (L) _____ x Width (W) _____ Distance between openings (O) _____ Bottom of rail to top of hopper (H) _____	
Round openings	Diameter (D) _____ Bottom of rail to top of hopper (H) _____	



Distributed By:



ChicagoVibratorProducts
Flow and Compaction
Division of CVP Group
800-842-7284 (P)
866-247-7538 (F)
Solutions@ChiVib.com
www.ChicagoVibrator.com

To submit the completed form please
fax to 866-247-7538
or email to:
Solutions@ChiVib.com

**COMPANY WITH
QUALITY SYSTEM
CERTIFIED BY DNV
= ISO 9001:2008 =**

Problem Solved™ GUARANTEED!

Form No. L3729-01/21
© Martin Engineering Company 2007, 2020